





## SUMMARY

- 03** The Company
- 04** Main Tasks In Argentina
  - Main Tasks In Latin América
  - Trade References
  - Bank References
- 05** Our Clients
  - Our History
- 06** Our Industrial Plants Bernal
- 07** Turnkey Plants
- 08** Storage Plant and Feed Mill, Turen - Portuguesa, Venezuela
- 10** Premises for Latin American Poultry Exhibition, Santa Cruz de la Sierra, Bolivia
- 11** Hatchery, Riojanas Farm, La Rioja- Argentina
- 12** Sheds, Design and Construction Integrated Farms
- 13** Adequacy, Preparation and Construction of the Farms
- 14** Design and Construction Integrated the Modular Hospitals
- 15** Complete Modular Hospitals
- 16** Hospitalization Pavilions
- 17** Our farms in Latin America and the World
- 20** Some destinations productive of our structures

## WHO WE ARE

Private Enterprise  
Metallurgical Argentina,  
Oriented industrialization:

- Construction
- Plant Storage and Processing of Agricultural Production

## OUR CRITERIA

Us are included in membership Groups:

- Productive Business Sets different value chains.

Analyze the main needs of these groups.

Try to give solutions with multidisciplinary teams.

We strive to be:

- Respectful,
- Careful,
- Relevant.

We ensure that there is consistency between what we say and do.

## GROUPS OF BELONGING

Customer Value Chain:

- Argentina Poultry
- Latin American Poultry
- World Poultry
- Latin American agricultural production

Vendor Value Chains:

- Steel and other building materials.
- Metalworking light and heavy
- Robotics and Industrial Automation

Companies:

- Argentina
- Latin America
- World

## MAIN TASKS IN ARGENTINA:

A) Contribute to Increase Argentine external surplus, exporting:

Exportamos:

- Poultry houses, swine and other animals.
- Equipments of these sheds.
- Complete Modular Hospitals / Hospitalizations Pavilions
- Design and Construction of Farms
- Design, Procurement and Construction of Plants:
  - Feed manufacturing
  - Storage of Cereals and Flours
  - Processes of food processing industries

Turnkey Export all these buildings and facilities

B) Create Employment in the Country.

c) Promote the Productive Integration, Trade and Social with Latin America.

b) Provide the Industrial Development and Social in Argentina.

e) To position Argentina as a technology solutions provider of high added value in the region and the world.

## MAIN TASKS IN LATIN AMERICA:

Develop

- Trying to Prevent only raw material exports.
- Defender Latin American Industrial Exports Increase.

In Latin America provide Capital Goods, vital to the development of each country.

## MAIN TASKS IN THE WORLD:

Contributing to Industrialization:

- Construction.
- Plant Storage and Processing of Agricultural Production.

## TRADE REFERENCES

Siderar  
Acindar

## BANK REFERENCES

Banco de la Nación Argentina  
Banco Credicoop

## OUR CLIENTS

- Bolivarian Republic of Venezuela, MPP Agricultura y Tierras- CVAL
- PDVsa
- Government of the Province of La Rioja, Argentina, SAPEM Riojanas Farms, SAPEM Cerdo de los Llanos.
- Avicola Sofia, Sta. Cruz de la Sierra- Bolivia
- Protinal-Proagro, Venezuela
- La Caridad Group, Venezuela
- Tres Arroyos Farm, Argentina
- Pollolin, Argentina
- San Fernando Group, Perú
- Cargill, Tip Top, Nicaragua
- Cargill, Alcon Honduras
- Pilgrims México
- Alvorada Group, Brazil
- Guaraves, Brasil
- Avicola Chorombo, Chile
- Holding Leong Hup, Malasia, Indonesia, Filipinas
- Melo Group, Panamá
- Toledano, Panamá
- Pollo Cibao, Rep Dominicana
- Bahamas Food, Bahamas
- Cobb Vantress, United States of America

## OUR HISTORY

Ours is a family business that has been dedicated to the items Metallurgical and Building since 1960.

We've known for being innovative and create products to meet the needs of production and economic development will pose to our societies.

The relevance of our analyzes and proposals, the excellent quality of our products and the decision to work for large groups more productive, has positioned us as American and world leaders in our field.

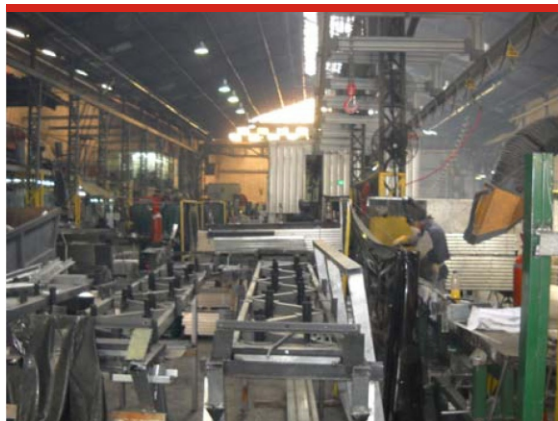
We have the flexibility to have different own complementary areas:

- Metallurgical Company, a modern industrial plant of 6,000 m<sup>2</sup>, equipped with robotic welding lines.
- Technical and Procurement Office that allows us to carry out projects in all countries of Latin America
- Bureau of Foreign Trade, with extensive experience
- Construction Company, for Civil Works and Erection, at this time in Venezuela, we can open the same operation in other countries.

We have provided materials and / or works constructed by more than 5,000,000 m<sup>2</sup> in all countries of Latin America, the Caribbean Islands and South East Asia.

## OUR INDUSTRIAL PLANT BERNAL

Alem Plant, Bernal - Quilmes, Province of Buenos Aires, Argentina





# Turnkey plants

## STORAGE PLANT AND FEED MILL, TUREN - PORTUGUESA, VENEZUELA

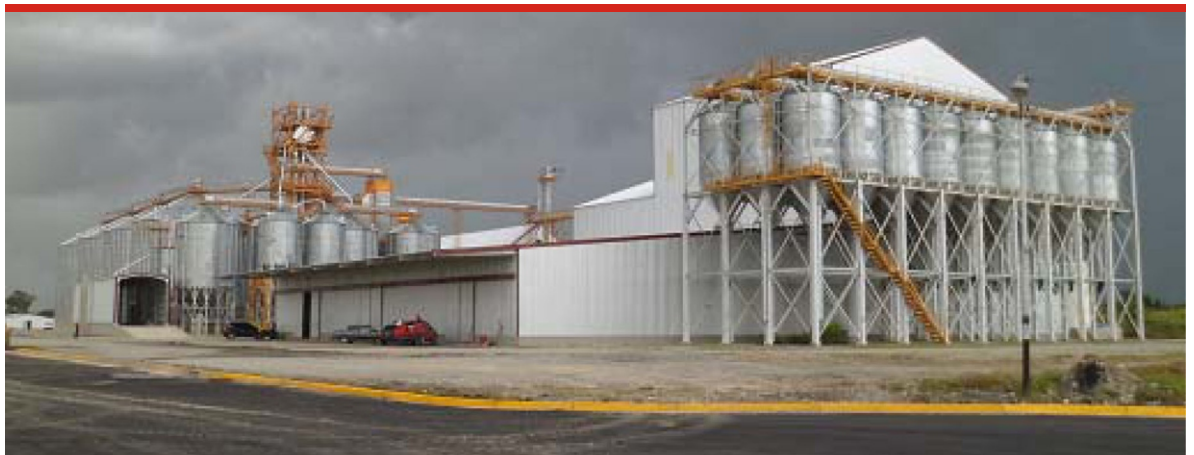
Storage Plant: cereal, 8 Ton silos of 2500 ton each one

Flour cell, of 6000 tons

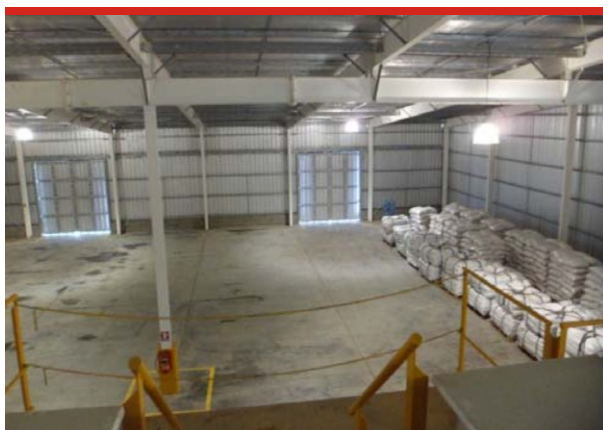
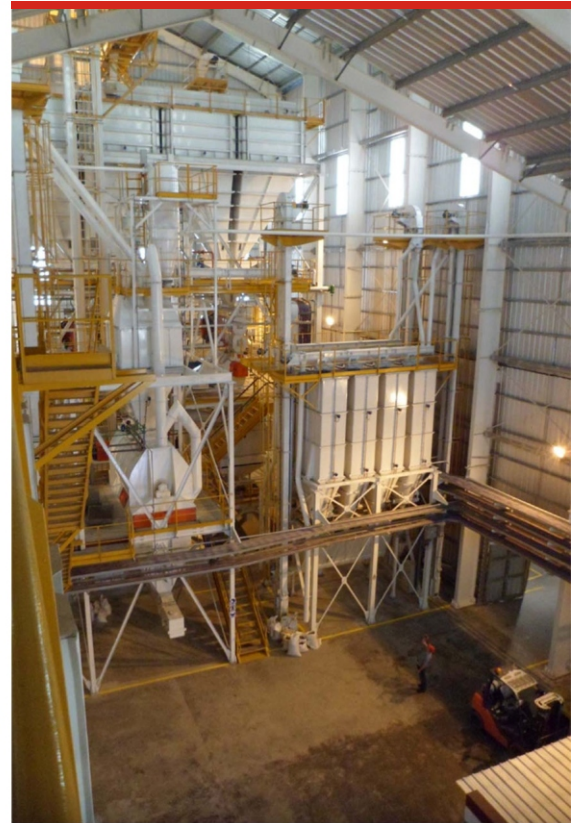
Feed Mill Plant 60 ton / hour

Final Product Silos of 980 ton

Additional Facilities: Balance, school and offices, toilets



## GENERAL AND DETAILED VIEWS OF THE COLLECTION PLAN AND AB PLAN



## PREMISES FOR LATIN AMERICAN POULTRY EXHIBITION, SANTA CRUZ DE LA SIERRA, BOLIVIA

This building was designed exclusively to house the exhibition of Latin American Congress of Santa Cruz de la Sierra in 2003. It was built on the grounds of Hotel Los Tajibos were 10,000 m<sup>2</sup>, designed under the concept of building and equipment to recreate poultry house tunnel ventilation. In over 150 exhibitors and was visited in the three-day event for over 4000 people, the highlight and particular to its partial dismantling later, hosted the press room of the Summit of the Americas and its Total disarmament and conditioning for 95% of the materials and structures used were mounted in the same area of Santa Cruz as a poultry farm owned by local firm Sofia Av.



## HATCHERY, RIOJANAS FARMS, LA RIOJA, ARGENTINA

The plant covers an area of 2100 m<sup>2</sup> of building itself of Incubatorio and 120 m<sup>2</sup> of offices and ancillary facilities such as changing rooms and multiple uses. The plant was designed for its next expansion so the shed is ready and armed to its final dimension and when it is in use 70% of the floor space being closed with panels and giving the possibility of retrofitting space commensurate the requirements. Today the plant has facilities for the production of about 120,000 chicks per week and is expected within two years to double its production, only the new machines should be placed and put the panels.





# Sheds, Design and Construction Integrated Farms

## ADEQUACY, PREPARATION AND CONSTRUCTION OF THE FARMS

The company from inception of design, implementation and feasibility studies on land previously selected by our staff, to build farms under the highest standards of biosecurity and detailed knowledge of the rules and building regulations of the country where you are working.





# Design and Constructions the Modular Hospitals

## COMPLETE MODULAR HOSPITALS (SUITABLE FOR COVID-19)

We offer the Complete Hospital to operate autonomously from existing hospitals, since it has been seen that in several hospitals' biosecurity has partially expired and could surely affect the health of health personnel.

## COMPLETE MODULAR HOSPITALS C.M.H.

Designed under the recommendations of the World Health Organization (WHO) and high biosafety standards

Nuestro Diseño de Bioseguridad incluye diferentes líneas de ingreso y egreso:

- Personas
- Alimentos
- Insumos

### It includes:

- 1 Income and Logistics module
- 3 PIP Primary Hospital wards, with 546 beds
- 1 Intermediate Therapy Internment module, with 98 beds
- 1 Intensive Therapy Internment module, with 98 beds
- Total Hospital: 742 beds
- 1 Clinical Analysis Laboratory
- 1 operating room with 2 operating rooms
- Support Facilities and Logistics
- Possibility of attaching the External Office Pavilion



## PRIMARY HOSPITAL WARD

Basic module called the Primary Hospital Ward (PIP), can be used individually or as part of a CHM Modular Hospital Complex. Our Modular Construction System allows us to easily deliver Modules of many sizes to suit each particular requirement.

The modules can range from simple hospitalization modules for primary patients with minimal conditions to modules suitable for working with isolated and highly complex hospitalization areas.

Hospitalization Pavilions Intermediate Therapy IT and Intensive Care Unit ICU

The modules can contain one bathroom per sector, in order to reduce patient transfers and maintain a more severe degree of isolation.

These baths are provided with the Complete Installation of Sewer Drains (Pipes, Chambers, etc) or with Chemical Baths, which will not need Drains.



Once the emergency is over, they can be completed with more high technology and remain as lasting extensions of hospitals. They can be raised and moved to be re-assembled as USP Permanent Sanitary Units, in remote areas and lacking Sanitary Rooms, and can also be used as Multipurpose Rooms, Offices, Dependencies.

## OUR FARMS IN LATIN AMERICA AND THE WORLD



Argentina



Argentina



Venezuela



Perú



El Salvador



Rep. Dominicana

## OUR FARMS IN LATIN AMERICA AND THE WORLD



Brasil



Nicaragua



Honduras



Brasil



México

## OUR FARMS IN LATIN AMERICA AND THE WORLD



## SOME DESTINATIONS PRODUCTIVE OF OUR STRUCTURES



Reproductoras y abuelas



Pollos de engorde



Cabras lecheras

